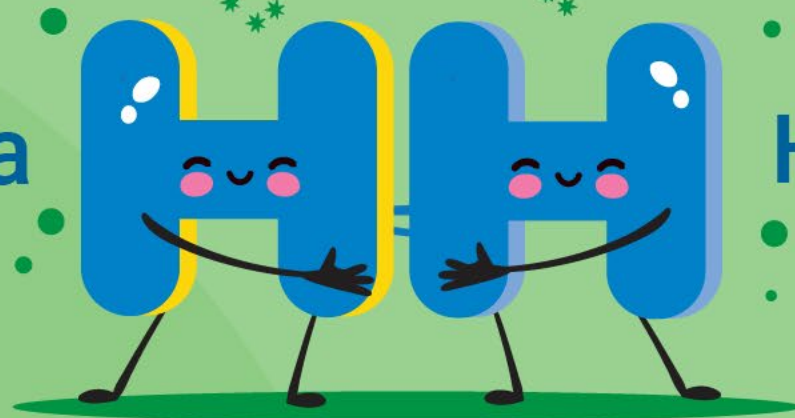


Turvallinen kampus



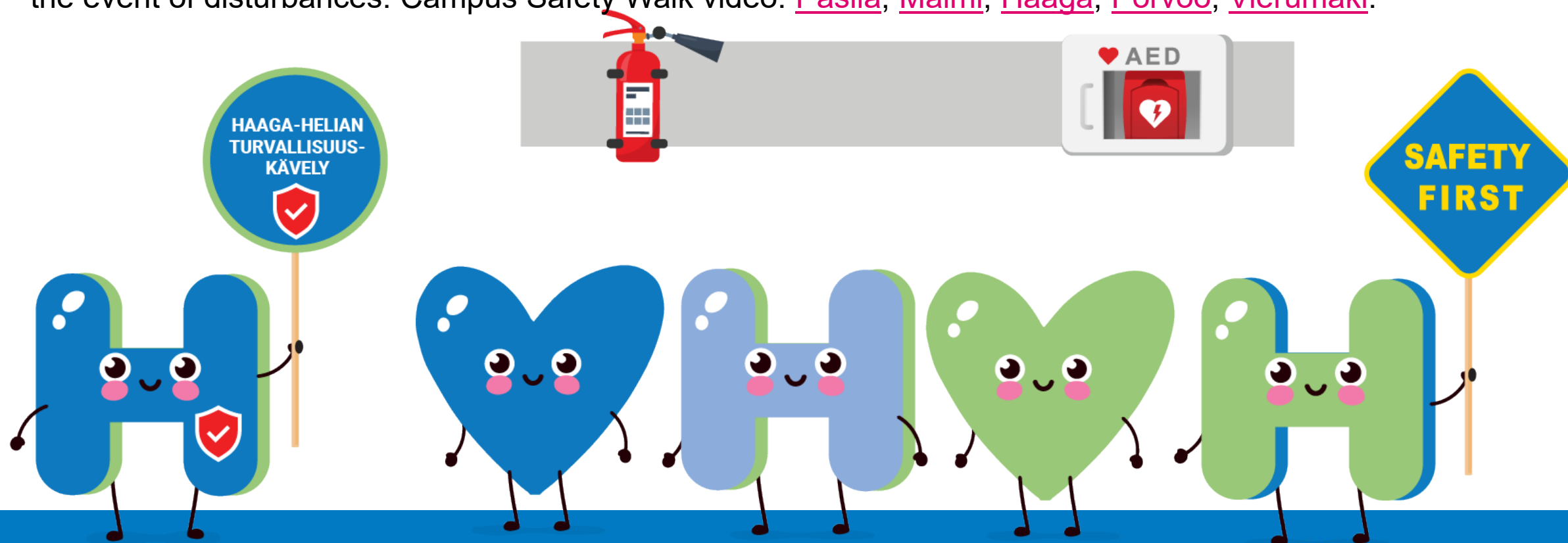
Haaga



Helia

Safety walk

The purpose of the safety walks is to familiarise staff and students with campus safety issues. Safety walks help people to become aware of alternative routes and to understand where the safety equipment is located. The aim is to create a memory imprint for the participants, which promotes safe operation in the event of disturbances. Campus Safety Walk video. [Pasila](#), [Malmi](#), [Haaga](#), [Porvoo](#), [Vierumäki](#).



Safety Team

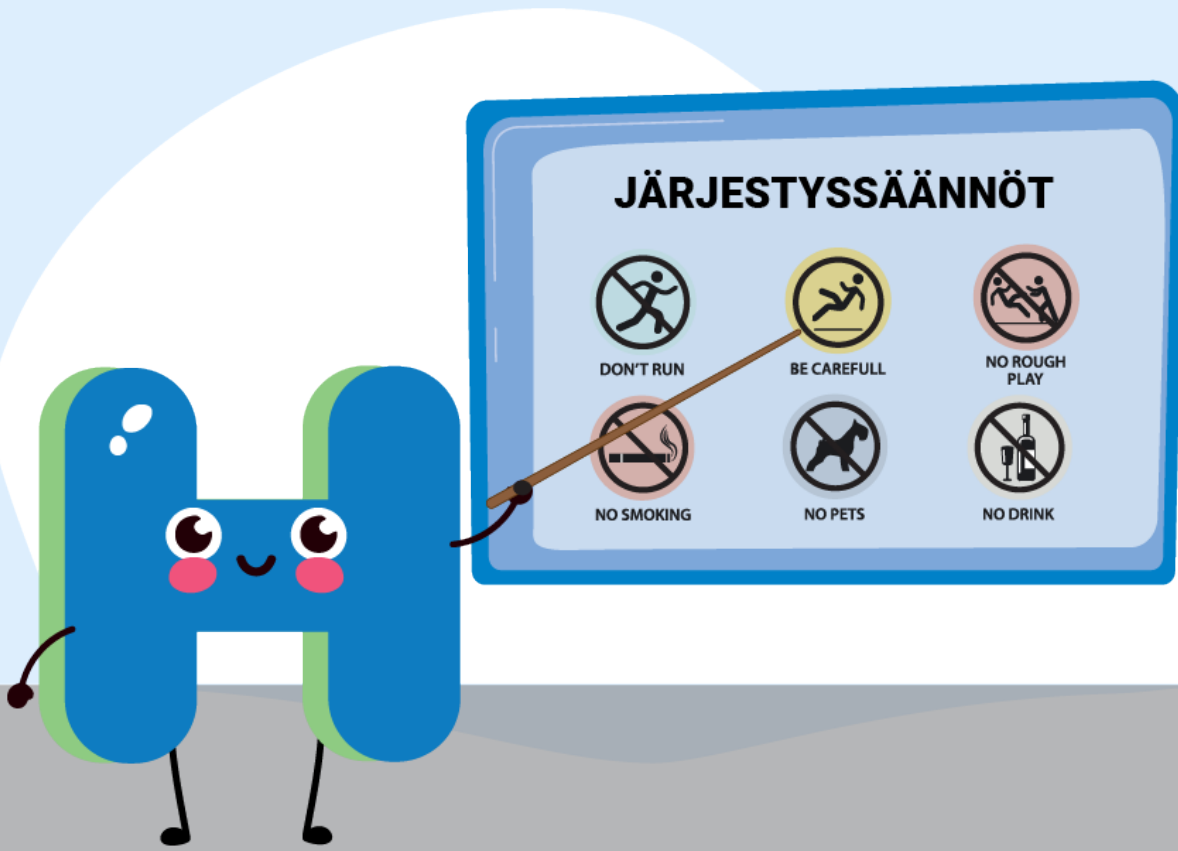


Security organization

- The responsibility for a safe learning and working environment lies with the University of Applied Sciences. The responsibility for the group always lies with the teacher.
- Everyone working and studying at Haaga-Helia is responsible for collective safety.
- At Haaga-Helia, Rector Teemu Kokko, Administrative Director Kari Salmi and Security Manager Mia Kivelä are responsible for security.
- Everyday safety is the responsibility of the campus campus manager, the security officer, in cooperation with other actors.
- The campuses have their own campus security team. You can identify the staff by their ID card.

Rules and regulations of universities of applied sciences

- Apply to all activities at Haaga-Helia and to every member of our community.
- Good behaviour – inappropriate behaviour is always addressed.
- Intoxicant-free and non-smoking.
- Careful handling of property and information.
- The rules and regulations are based on the Universities of Applied Sciences Act (932/2014).



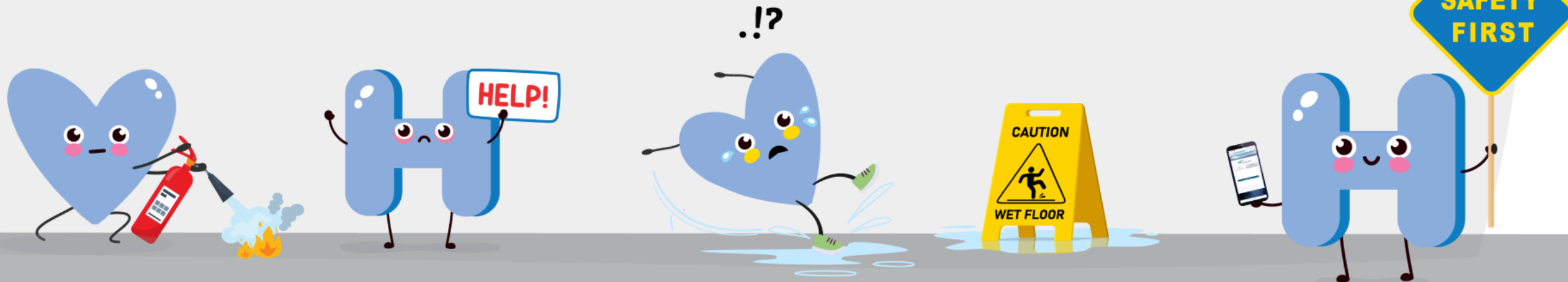
Sattuiko läheltä piti -tilanne tai huomasi ko puutteen, joka vaikuttaa turvallisuuteen Haaga-Heliassa?

TEE TURVALLISUUSHAVAINTOILMOITUS!

Kaikkiin palautteisiin reagoidaan.



<https://palveluportaali.haaga-helia.fi/ssc/app#/order/1924146/>



Turvaamo

Report any harassment, discrimination, bullying or other inappropriate behaviour experienced or observed.

Haaga-Helia.fi / For students / Guidance and well-being/ [Turvaamo](#)



TURVALLISTA OLLA



TURVALLISTA OSALLISTUA



TURVALLISTA OPIIA

Emergency contact information

Hätätilanne soita 112
Noudata annettuja ohjeita

Emergency, call 112
Follow the instructions

Ilmoita infoon / Report info
0400 230 404

Osoite / Address
Haaga-Helia ammattikorkeakoulu
Haaga-Helia University
of Applied Sciences

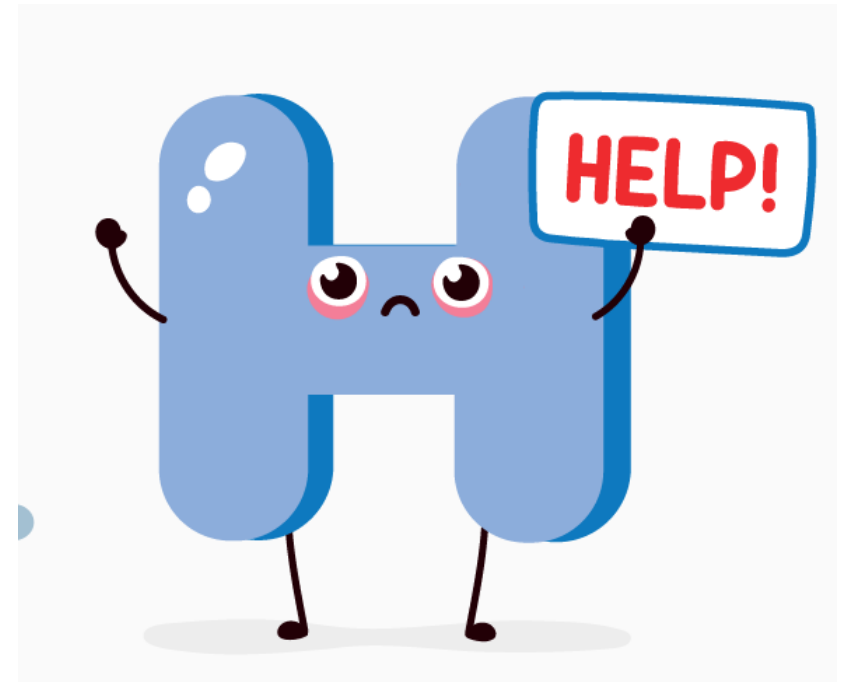
Ratapihantie 13 Helsinki

Tila / Room
2023
Kerros / Floor
2

Info 0400 230 404
Auttaa neuvoo ongelmatilanteissa
Will help and guide in case of problems

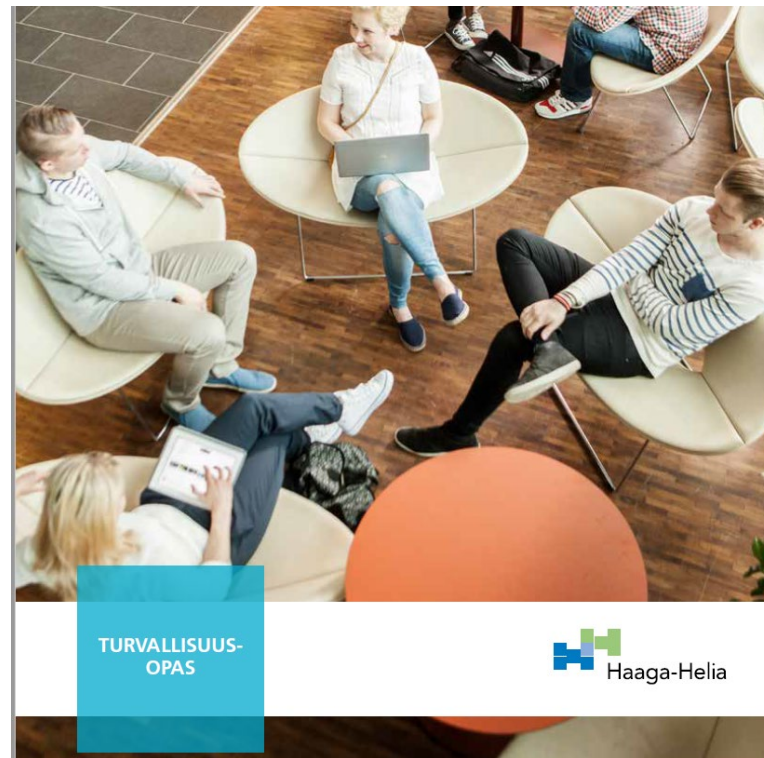
Missä tilassa olette?

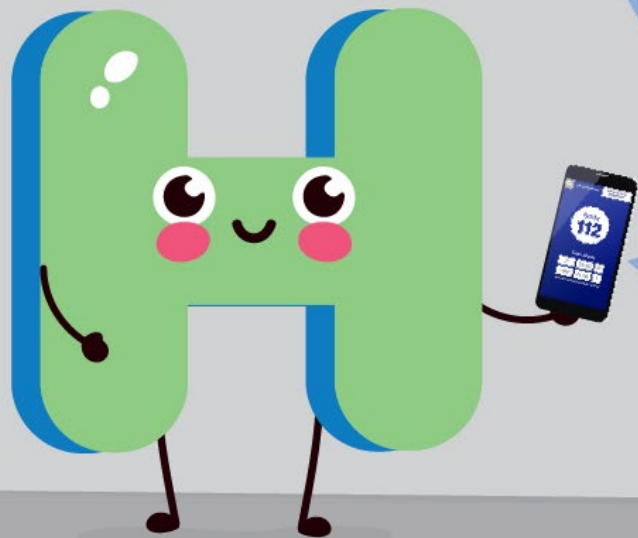
- The facility number and emergency numbers can be found in the red-and-white A4 instructions on the wall of the room



Safety Guide

The safety guide summarises instructions for different threats. Learn about these and the campus rescue plan. You can find them (haaga-helia.fi) on the safety pages– [Turvallinen Haaga-Helia](https://www.haaga-helia.fi/turvallinen-haaga-helia)





Acute emergencies

- DOWNLOAD the SUOMI 112 app to your phone
- Calm down and call 112
 - Know your location
 - Follow the instructions
 - End the call only after you have permission to do so
 - Guide helpers to the scene

Seizure or accident

Find out and check

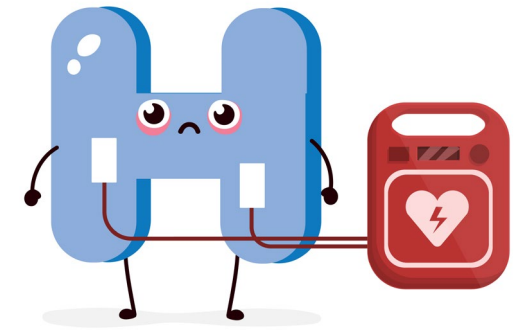
- What has happened?
- Check the condition of the person (whether he wakes up, breathes).
- If the person is breathing, report the incident to the information desk, which can direct further help to the scene.

If necessary, provide first aid

- An unconscious but breathing patient is turned to the side position.
- If the person is not breathing, start first aid according to the instructions of the Emergency Response Centre on the basis of your competence.

Make an emergency call

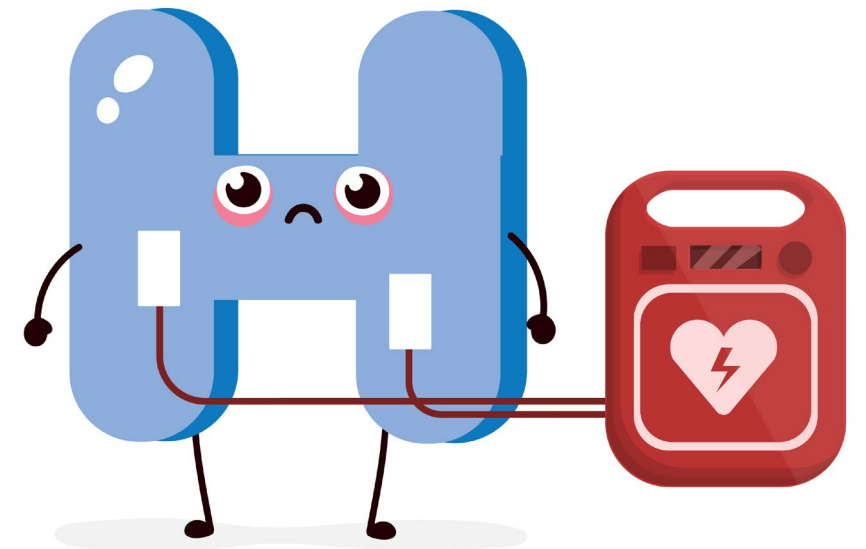
- Call 112.
- Tell me where you're calling. **Haaga-Helia University of Applied Sciences Oy Ratapihantie 13, HELSINKI.** Also indicate your location in the building!
- Tell us what happened.
- Follow the instructions.
- Report any changes in the patient's condition to the emergency response centre.
- Report the incident to the info desk at the latest after the situation.



First aid supplies and heart attacker

First aid cabinets are located:

- Lobby service point
- On each floor, the information can be found on the floor plan map in the lobby
- Lobby services responsible for equipping first aid kits and bags
- The semi-automatic **defibrillator, or heart attacker**, or AED, is located in a cabinet installed near the lobby service point. The cabinet has a siren, which is activated when the cabinet is opened, silences when the cabinet is closed.



First aid- Helping with the side position



First aid - basic resuscitation of an adult





Exit accessories

Red safety boxes

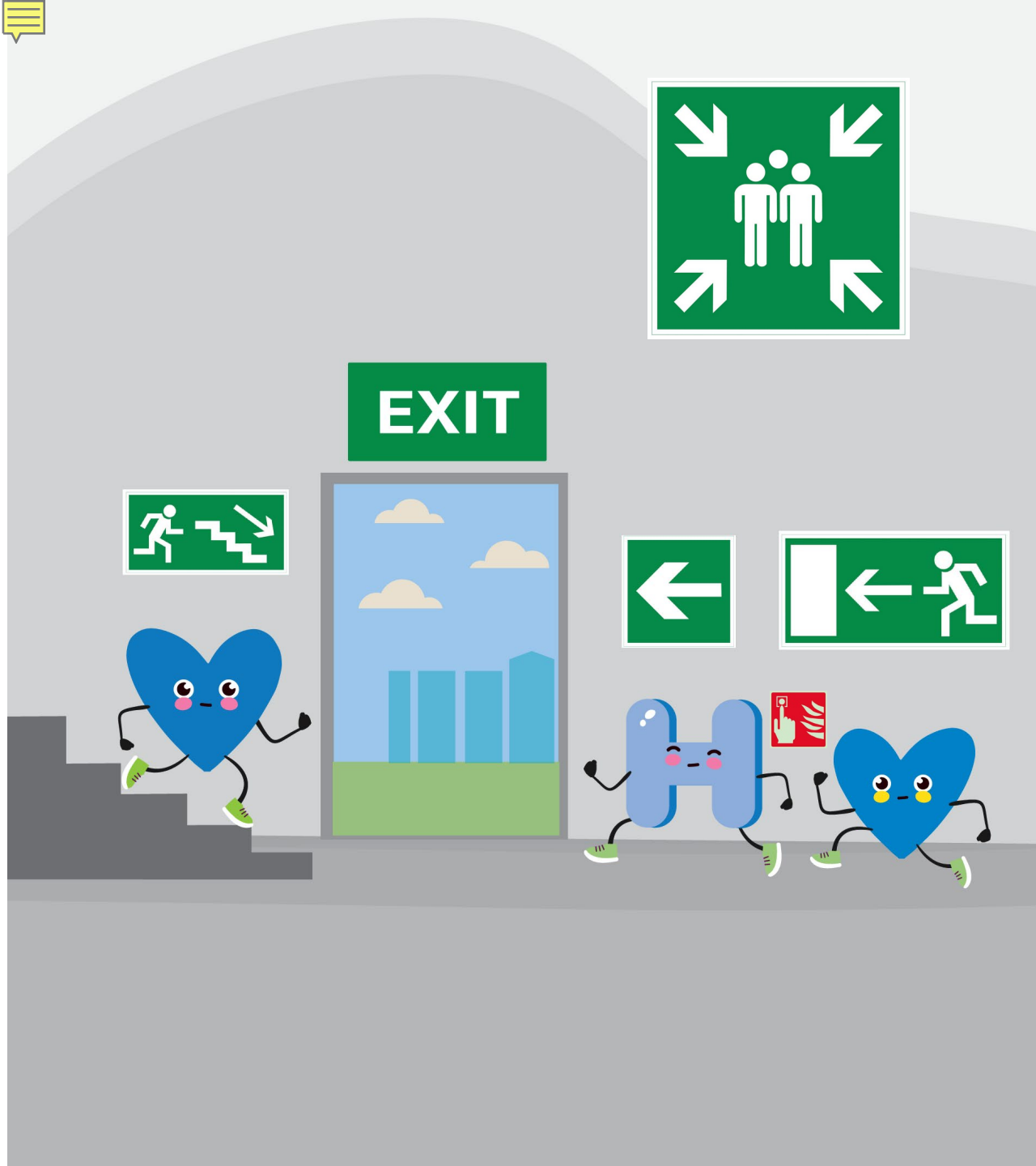
Located in lobbies near safety information boards. Porvoo classes . Inside the boxes you will find:

- Protection Officer's yellow reflective vest
- Space blank-checked notes
- Directions, floor map

Take an exit safety walk

- Check the floor map for exit signs and meeting places.
- Where are the nearest first-aid extinguishing equipment, first aid supplies.
- Follow the exit signs to the meeting place.

Memory trace helps to survive!

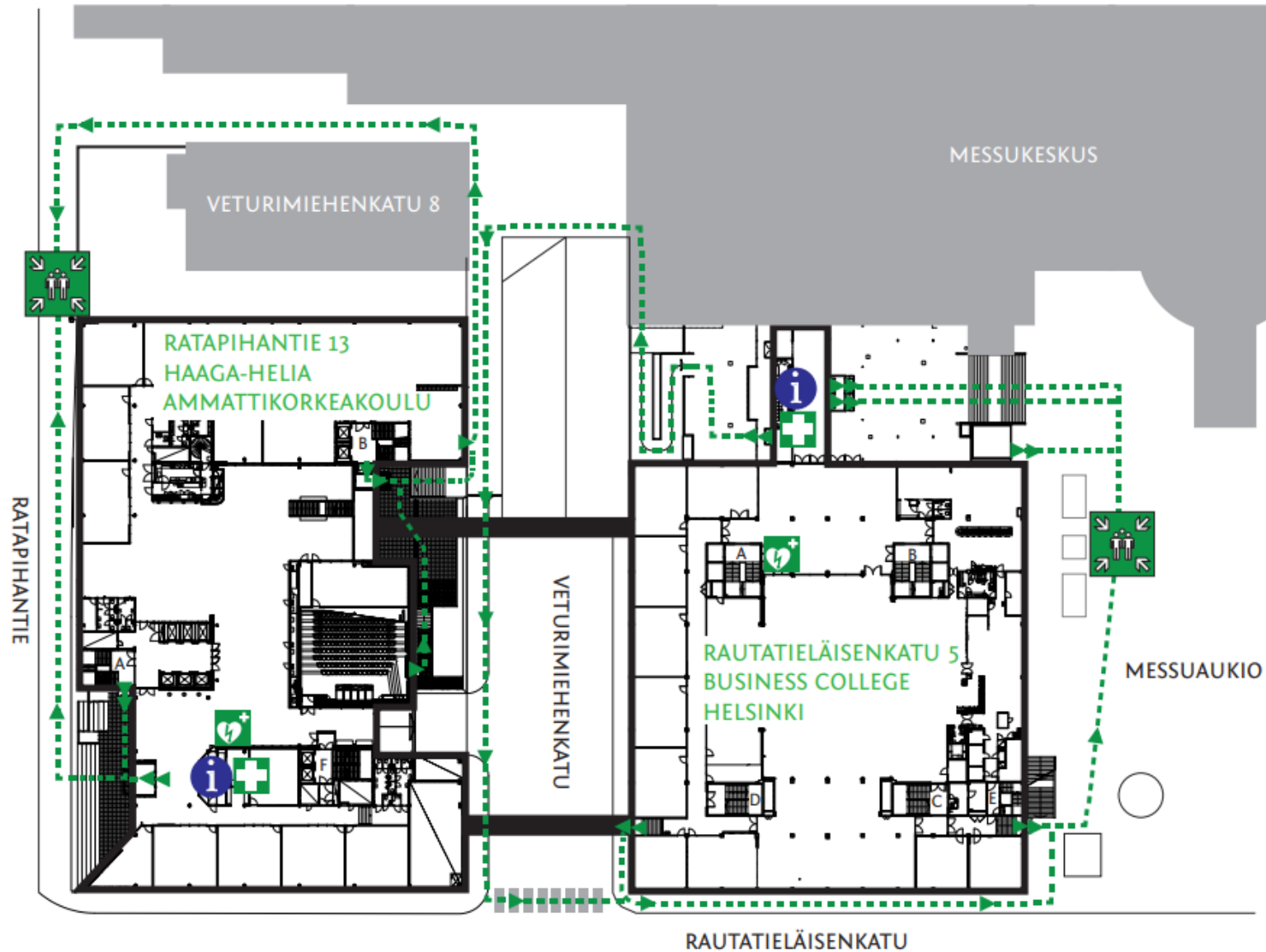


Leaving the building Video

- Fire bells ringing, announcement, secapp message
- Use the nearest safest exit, not smoke!
- Do not use the elevator. Listen and follow the instructions
- Help others when needed. Move away from danger, away from smoke!
- Gathering at a designated assembly place
- Keep your group together and notify the deputy conservation director if someone is missing from your group.
- Do not leave the meeting place until you have received permissions. Comes as an announcement or megaphone.
- Continuing to study if it is safe to do so

KIINTEISTÖ OY OPETUSTALO

Haaga-Helia ammattikorkeakoulu ja Business College Helsinki



PALOHÄLYTYS FIRE ALARM

- Poistu rakennuksesta.
- Älä käytä hissiä.
- Vältä savua
- Siirry viipymättä kokoontumispaikalle.

- Exit the building.
- Do not use the elevator.
- Avoid smoke.
- Move directly to the evacuation area.

HÄTÄPUHELU EMERGENCY CALL

- Yleinen hätänumero **112**.
- Kerro: mitä on tapahtunut ja tarkka osoite.
- Odota ohjeita.

- Emergency number **112**.
- Inform: what happened and the exact address.
- Wait for further instructions.

TULIPALO FIRE

- Pelasta vaarassa olevat.
- Sammuta alkusammuttimella.
- Soita hätänumeroon **112**.
- Auta muita.
- Älä vaaranna itseäsi!

- Rescue those in danger.
- Use a fire extinguisher.
- Call the emergency number **112**.
- Help others.
- Do not put yourself in danger!




PARKKIPAIKKA
PARKING LOT



- KERROS
VÄNING
FLOOR
- 1. OPPIMISTILA
INLÄRNINGSTRYMME
LEARNING ENVIRONMENT
- 2. KIRJASTO
BIBLIOTEK
LIBRARY
- 3. WC
- 4. LOKEROT
SKAP
LOCKER
- 11. NEUVONTA
INFO
RECEPTION
- 12. OPINTOTOIMISTO
STUDIERYÄ
STUDENT AFFAIRS OFFICE
- 13. OPISKELIJATERVEYDENHUOLTO
STUDENTHÄLSOVÄRD
STUDENT HEALTH CARE
- 14. OPISKELIJAKUNTA
STUDENTKÄR
STUDENT UNION
- 15. RAVINTOLA
RESTAURANG
RESTAURANT
- 16. KAHVIO
CAFÉ
CAFÉ

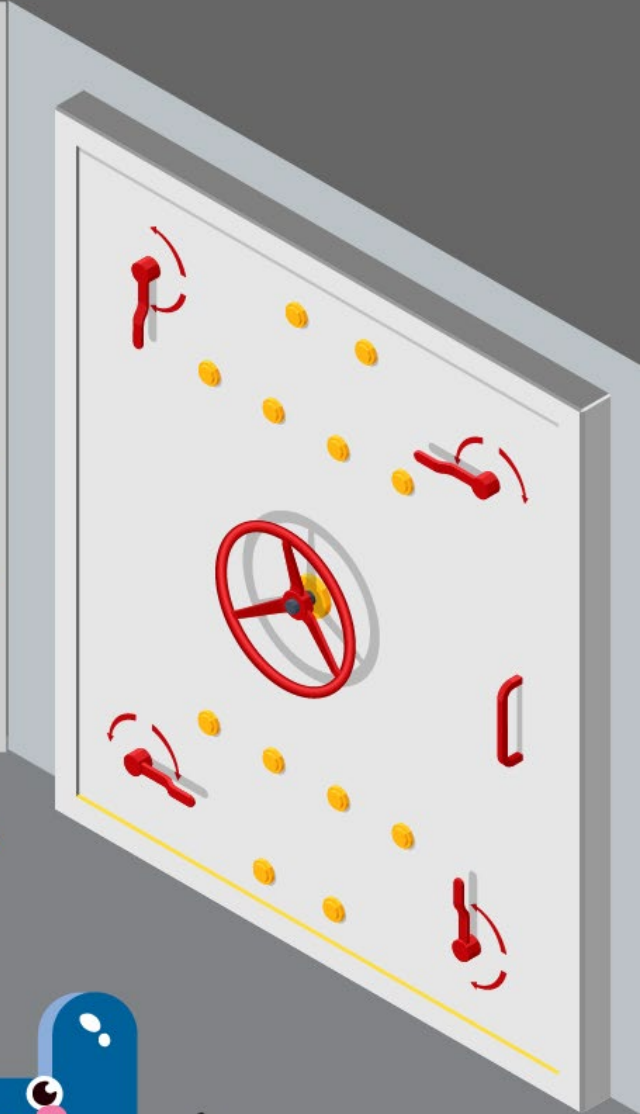
OPASTEET / SIGNS

 PALOPOSTI FIRE HYDRANT	 PALOILMOITIN PAINIKE FIREALARM CALL POINT	 HÄTÄPOISTUMUSTIE EMERGENCY EXIT	 DEFIBRILAATTORI DEFIBRILATOR	 ENSIATARVIKKEET FIRST AID STATION
 KÄSISAMMUTIN FIRE EXTINGUISHER	 SAMMUTUSPEITE FIRE BLANKET	 KOKOONTUMISPAIKKA EVACUATION ASSEMBLY POINT	 Varatie VARATIE WAY OUT	 SILMÄSUIHKU EMERGENCY EYE WASH



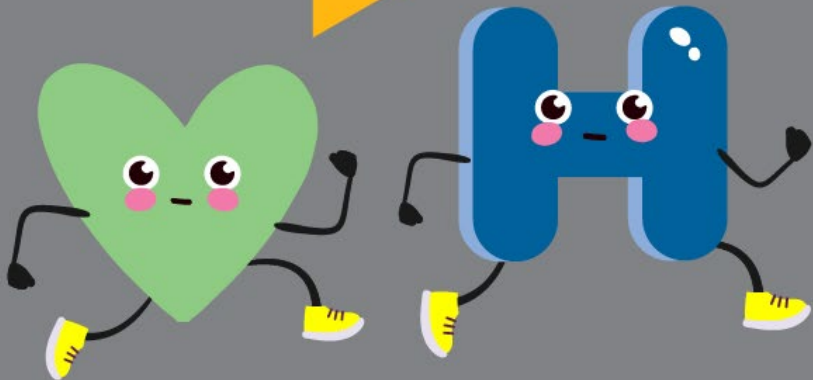
Sheltering inside

- In dangerous and emergency situations, the authorities warn the public with an emergency warning and a general danger signal. In this case, take shelter inside and close doors and windows as well as ventilation if at all possible.
- Taking shelter indoors is usually a sufficient means of protection, also in emergency radiation situations.
- Examples of situations when you need to take shelter inside:
 - a fire in the vicinity that generates a lot of toxic smoke
 - gas hazard when a hazardous goods accident has occurred in the vicinity
 - radiation hazard, e.g. Nuclear power plant accident



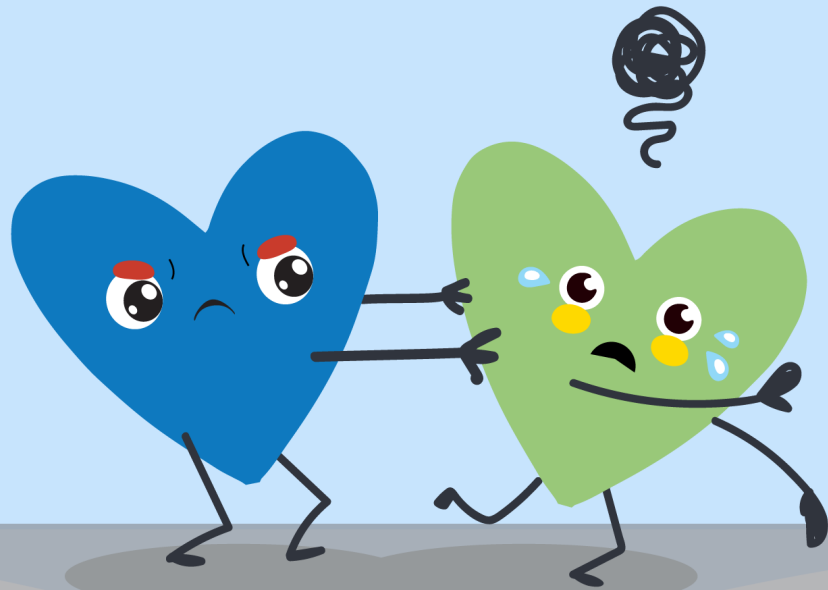
Protection against Civil defence shelter

- The civil defence shelter is intended for the protection of the population during a military attack. When the situation requires civil defence shelters to be put into use, the matter becomes an official order. The protectors must be ready for use and protection within 72 hours of the order, after which people can move into them.
- The civil defence shelter already protects as such without preparation: explosion and fragmentation effects, building collapses and pressure waves.
- In addition, when placed in a lockdown or filtration mode, the civil defence shelter protects against: fires, chemical warfare agents and ionizing radiation.





NO
VIOLENCE



Threatening situation [video](#)

- If you become aware of a shooting threat or other similar threat, report it immediately to the police on the emergency number 112, lobby service, security manager and staff.
- In the event of threats indoors or in the vicinity of the university, do the following, depending on the situation and possibilities:
 - Always flee away from the threat, to a safe space or outside (staff instructs).
 - Make sure the spaces are locked.
 - Turn off the lights in the room and close the curtains.
 - Make sure that the people in the room turn off their mobile phones and that the teacher's or situation manager's mobile phone is turned on silently.
 - Make sure that any obstacles are piled up in front of the door of the teaching space. Do not open the door, the police will open it.
 - Make sure those in the space stay low on the floor. Protect themselves where possible, e.g. desk.



Security, privacy policy

- Act in accordance with Haaga-Helia's [security rule](#)
- [Privacy policy](#) at Haaga-Helia

Safety Team



Preparedness and crisis team Crisis plan

- Haaga-Helia has a preparedness and crisis team tasked with preparing for disturbances and acting in disturbances that affect the entire Haaga-Helia.
- The aim is to prevent adverse psychological and physical effects, preserve the functional capacity of the higher education community and its members, support people's recovery, and strengthen the ability of the community and its members to cope with difficult situations.

Identify(s) signage?

Exit signs



Evacuation area



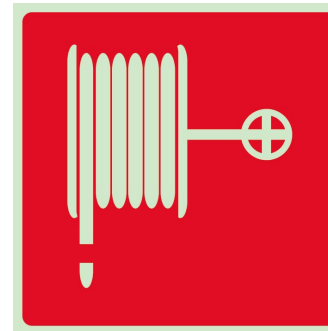
Fire extinguisher



Defibrillators



Fire hose reel

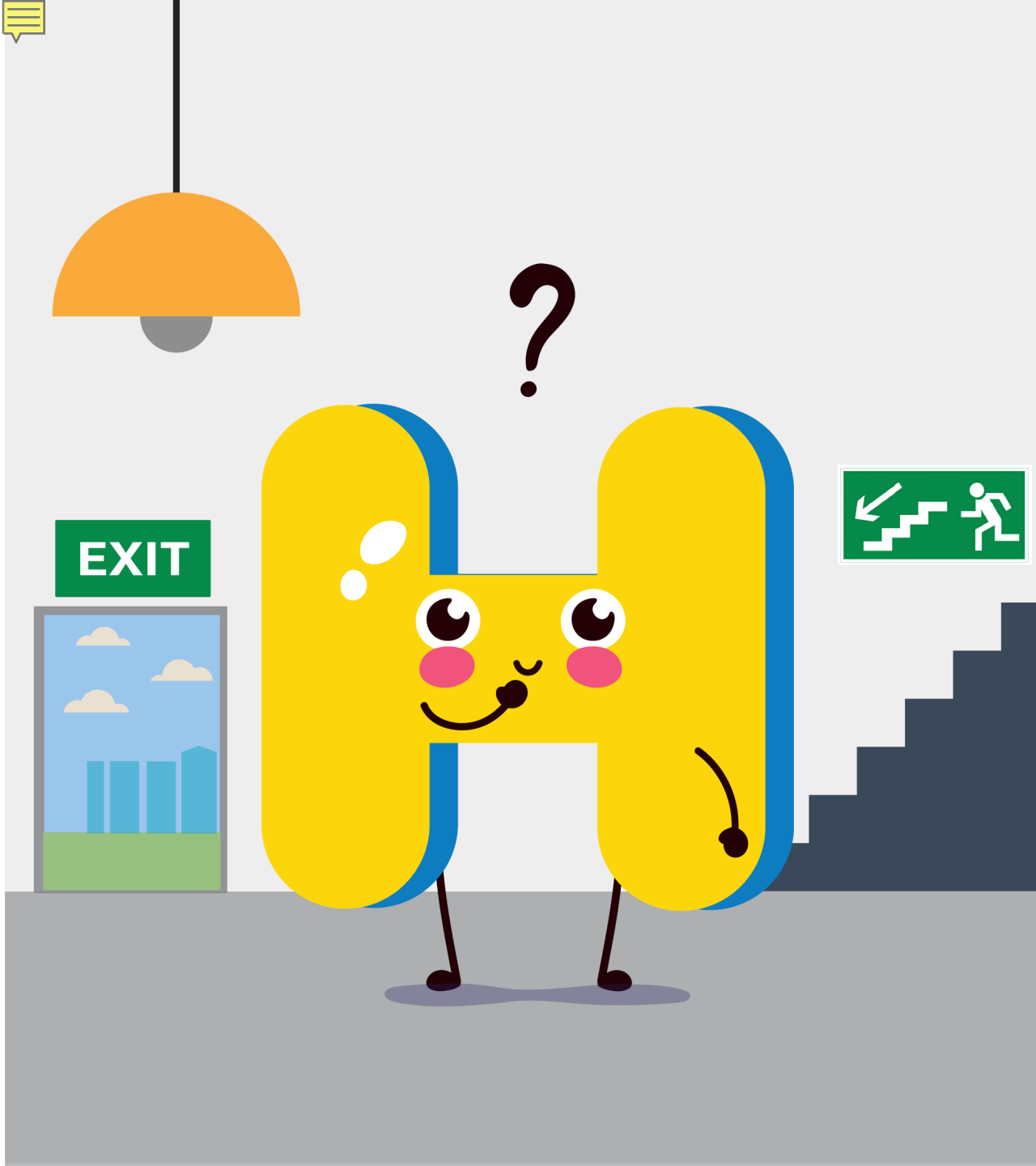


First aid



Fire alarm button





Questions?

Contact us:

mia.kivela@haaga-helia.fi

+358 509111644

[Turvallinen Haaga-Helia](#)

Thank you!



Let's make safety smarter together!